

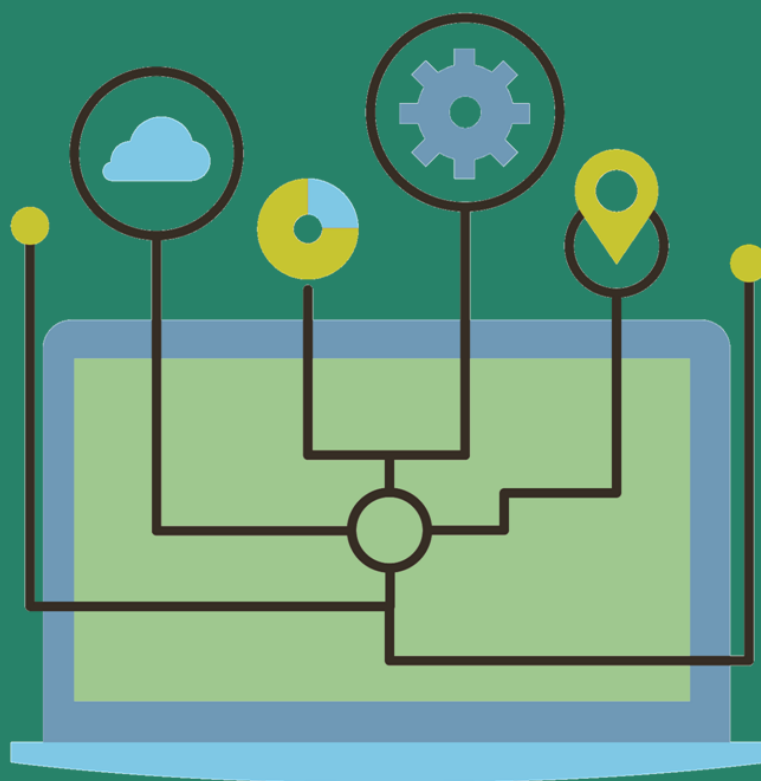
Report



NiPN
National Information
Platforms for Nutrition

Information platforms and electronic data services relevant to human nutrition in Kenya

John O. Owuor



ABOUT THE NIPN INITIATIVE

National Information Platforms for Nutrition (NIPN) is an initiative of the European Commission supported by the United Kingdom Department for International Development and the Bill & Melinda Gates Foundation. The initiative aims to strengthen national capacity to manage and analyse information and data from all sectors which have an influence on nutrition and to disseminate and use information so as to better inform the strategic decisions countries are faced with to prevent undernutrition and its consequences. A Global Support Facility has been set up by the European Commission to coordinate the NIPN initiative, managed by the Agrinatura alliance and hosted by Agropolis International.

DISCLAIMER

This publication has been commissioned by the Global Support Facility for the National Information Platforms for Nutrition initiative. The findings, interpretations, conclusions, advice and recommendations expressed in this work are those of the authors and do not necessarily reflect the views of the organizations that host, manage or fund the Global Support Facility.

AUTHOR

John O. Owuor

COPYRIGHT STATEMENT

Copyright © 2017 by the Global Support Facility for the National Information Platforms for Nutrition initiative. Agropolis International, 1000 avenue Agropolis, 34394 Montpellier cedex 5, France.

Cover page illustration: © Bloomicon/Schutterstock

This report may be freely reproduced, in whole or in part, provided the original source is properly cited and acknowledged.

RECOMMENDED CITATION

John O. Owuor. *Information platforms and electronic data services relevant to human nutrition in Kenya*. Montpellier, France: Agropolis International, Global Support Facility for the National Information Platforms for Nutrition initiative. 2017.

PUBLICATION DATE

June 2017

The full report can be downloaded here:

<http://www.nipn-nutrition-platforms.org/IMG/pdf/data-platforms-kenya.pdf>

Contents

Introduction.....	1
Data Sharing Platforms and Portals.....	2
Ministry of Health Nutrition Platform	2
Kenya National Data Portal	2
Kenya National Bureau of Statistics Data Platform.....	3
Data Visualization Portal	3
KenInfo – Kenya Socio-Economic Database	3
Kenya National Data Archive (KeNADA).....	4
Integrated Management Information System (IMIS)	4
Kenya Open Data Platform	4
Open County Dashboard.....	5
Demographics Kenya Dashboard	5
Kenya GIS Data Portal.....	6
Kenya Inequalities Portal	6
Kenya County Health Fact Sheets Dashboard	7
Kenya NCD Info Portal	7
Kenya Country STAT Database.....	8
Maji Data Dashboard	8
Wazi Map Kenya Dashboard	9
Data sources in Kenya relevant for nutrition.....	10
National Periodic Surveys.....	10
Routine Data Systems	10
Kenya Health Information Systems (KHIS).....	10
Agricultural Information System	10
Early Warning.....	11
Other Sources of Information	12
Kenya Threshold 21 (Kenya T21)	12
The KEMRI/Wellcome Trust Research Programme	12
Appendix: Major sources of data relevant to NIPN	13

Introduction

The policy framework for a comprehensive approach to food and nutrition information in Kenya is clearly set out in the national Food and Nutrition Security Policy¹. The policy emphasizes the availability of good quality and timely information on food and nutrition for policy formulation and to manage integrated food and nutrition security strategies, programmes and interventions. Recognizing the broad scope of food security and nutrition related information, the policy supports capacity building of the staff of sectoral ministries and agencies to manage crucial data and information for multi-sectoral analysis to help understand the drivers of improvements in human nutritional status in Kenya.

Kenya has over the years collected a wealth of data relevant to nutrition from national periodic surveys, sentinel surveys, routine data and research studies. The major challenges for nutrition information systems that were major concerns of information users in the early years such as sampling methods, data collection techniques, and reliability², have largely been addressed. Standards for conducting surveys and other area-specific rapid assessments have been developed³. However, the potential for sharing and coordinating the use of the information to allow integrated and holistic food and nutrition analysis for improved planning and programming has not been maximized. Advances have nevertheless been made to transform paper-based systems into digital data, thus improve data sharing.

This review was commissioned by the Global Support Facility for the National Information Platform for Nutrition in order to better understand potential sources and users of information related to nutrition in Kenya. It describes information platforms and electronic data portals that are relevant to human nutrition. These sources could be used to provide data for analysis to better understand the causes of malnutrition in Kenya, or could be provided with data, as an output of analysis. The review starts by describing the main data sharing platforms and portals including dashboards and websites from which information relevant to nutrition can be accessed to facilitate integrated food and nutrition analysis and other data sources. It then presents a matrix of the sources of data, where they are located, their accessibility and availability, the contact persons, and the address of relevant websites.

¹ Food and Nutrition Security Policy 2011. Agriculture Sector Coordinating Unit. Republic of Kenya.

² A Review of Nutrition Information Systems In Kenya. A report prepared for UNICEF by Save the Children-UK: January 2004.

³ Guidelines for nutrition assessments in Kenya: data collection, analysis and interpretation. 2008. Kenya National bureau of Statistics, Ministry of Public Health and Sanitation, European Commission and UNICEF.

Data Sharing Platforms and Portals

Ministry of Health Nutrition Platform

The Ministry of Health with support from UNICEF is establishing a nutrition platform of summary statistics obtained from national surveys such as Kenya Demographic and Health Surveys (KDHS), Multiple Indicator Cluster Surveys (MICS), routine District Health Information System, WASH programme, a Mid Upper Arm Circumference (MUAC) Surveillance System, Standardized Monitoring and Assessment of Relief and Transitions (SMART) surveys and County Integrated Development Plans.

The summary data on anthropometric status incorporated in the database by county include the prevalence of severe stunting, severe underweight, severe acute malnutrition and MUAC <11.5 cm, but does not report the prevalence of severe wasting or give any data on the total prevalence of each of the standard anthropometric indicators. Other data are summarised by county on water and sanitation, food consumption, infant and young child nutrition, morbidity of mothers and children, micronutrient supplement coverage, food security, population and mortality. *StatPlanet* software is used to create a graphical interface of an interactive map of all counties in Kenya to present data in charts and tables. It is still under development.

The platform has been uploaded to the Ministry of Health web site.

URL: <http://nutritionhealth.or.ke/country-main/nutrition-reports-on-maps/>

Contact: Lucy Gathigi, Nutrition and Dietetics Unit, Ministry of Health.

Kenya National Data Portal

The Kenya National Data Portal funded by the African Union provides open online access to various data from the Kenya database platform. The portal has three modules: data search, map pages, and dashboards capable of producing maps and graphs of data by province and the old districts of Kenya. The portal currently hosts data on Economics and Population. The portal is under development and has limited capacity in terms of summary data presentation.

URL: <http://kenya.africadata.org/en/>

Contact: unknown.

Kenya National Bureau of Statistics Data Platform

The Kenya National Bureau of Statistics is a semiautonomous government agency under the Ministry of Devolution and Planning. The Bureau is the principal government agency in Kenya responsible for collecting, analysing and disseminating statistical data; maintaining a comprehensive and reliable national socio-economic data base; and establishing standards and methods in the production and dissemination of statistical information across the national statistical systems⁴.

The KNBS has data portals that provide online databases and offline sources. The data sharing portals are described below.

Data Visualization Portal

This portal holds data on agriculture, public finance, health and education sectors. Summary data for these sectors are presented in charts and graphs which can be used to do quick comparisons and trend analysis.

KenInfo – Kenya Socio-Economic Database

KenInfo is a database platform developed by the Ministry of Devolution and Planning (then Ministry of Planning and National Development), the KNBS and UNICEF which was operationalized in January 2004. Following the launch of DevInfo 7, the platform for customizing KenInfo database, the KNBS shared the database with DevInfo in 2013 to facilitate sharing of data. KenInfo was last updated in November 2013.

KenInfo has 206 indicators (nutrition included) grouped in sectors, 83 areas and 158 data sources. It can be used to present summary data as tables, graphs and maps at national and county level. The platform also hosts a county database, EmbuInfo for Embu county and sub-county level data, last updated in April 2013. The link is <http://www.devinform.org/embuinfo/libraries.aspx/Home.aspx> with 61 indicators, 51 areas, 3 sources and 445 values. Other variables include shape files: national, all 47 counties and some sub-counties. KenInfo only provides data on anthropometric indicators from the KDHS in 2008-09.

Discussions with KNBS staff responsible for updating of the KenInfo said that the most current versions of the platform software are desktop (Version 6) and web version (Version 7). The desktop version was last updated last September 2015. The main challenge faced in managing the platform is a lack of an organized structure for updating values for indicators extracted from survey reports.

URL: <http://www.devinform.org/keninfo/>

Contact: Mr. Josiah Kaara, Kenya National Bureau of Statistics, Nairobi.

⁴ Kenya National Bureau of Statistics Strategic Plan 2013-2017.

Kenya National Data Archive (KeNADA)

The KeNADA portal provides datasets of surveys of individual respondents and households (60) collected by the Bureau since 1962 including censuses, integrated budget household surveys and surveys on HIV and malaria. It provides tools to users to facilitate further analysis and interpretation of the primary data. The primary data from the surveys are available on request and could provide data for multi-sectoral analysis to better understand factors associated with poor nutritional status.

URL: <http://statistics.knbs.or.ke/nada/index.php/home/>

Contact: Mr. Mutua Kakinyi, Kenya National Bureau of Statistics.

Integrated Management Information System (IMIS)

The IMIS, funded by UNFPA⁵ Ethiopia, is an open web-based platform focusing on population issues. It is a collection of several statistical databases using data from population censuses and household surveys. The IMIS operates on RETADAM (REtrieval of DATa for small Areas by Microcomputer), an interactive computer system for data processing, analysis and web dissemination of outputs at national and county levels. The outputs generated are in the form of cross tabulations, graphs and maps for use at county level. This system is under development and capacity building is currently being conducted for counties to use the system.

URL: <http://www.knbs.go.ke>

Contact: Mr. Paul Waweru, Kenya National Bureau of Statistics.

Kenya Open Data Platform

This is an online platform under the Information and Communication Technology (ICT) Authority of Kenya to make available development, demographic and statistical data to researchers, policy makers and the general public. Information in the platform will include: agriculture, health and social data, economy and finance, education, environment, and water and sanitation, some of which are yet to be populated. The usage of government data by public and learning institutions has increased significantly since the launch of the platform five years ago⁶. A total of 48 Government institutions and 34 county governments are contributing data to the portal.

URL: <http://www.opendata.go.ke/>

Contact: unknown.

⁵ United Nations Population Fund

⁶ www.ict.go.ke/online-portal-pushes-use-government-data/

Open County Dashboard

The Open County Dashboard is an open access summary information platform developed by the Open Institute in partnership with the Council of Governors (CoG) of Kenya and the World Bank Accountable Devolution Programme with funding from UKAid and the Australian Department of Foreign Affairs and Trade. The dashboard aims at strengthening the county governments' efforts to be transparent and accountable to their citizens by publishing county level data on development.

The dashboard presents summary statistics on agriculture, rural development, health, security, education, energy, science and technology, and budget indicators by county. Summary data comparing counties are presented in graphics for the following indicators: population (1999 and 2009), poverty gap, education, health, water and sanitation. Child growth data - adequate height for age - are also presented for each county, however the definition of this indicator or the source of data are not specified.

The statistics used in the dashboard are obtained from the following sources:

- Kenya Integrated Household Budget Survey 2005/06
- www.opendata.go.ke

URL: <http://kenya.opencounty.org>

Contact: Open Institute, State House Road, Nairobi. Tel: +254(0) 205231480. Email: hello@openinstitute.com.

Demographics Kenya Dashboard

Demographics Kenya is an open online dashboard for the visualization and analysis of demographic variables and socio-economic characteristics of the population at county level. The data used in the dashboard are based on the 2009 Kenya Population and Housing Census obtained from the Kenya Open Data platform.

The summary data are categorized under population (population by age and sex and household characteristics); education (highest level of education and school attendance rates); environment (main water sources and sanitation facilities) and housing (roofing, wall and floor materials). The county data are presented in graphics and on an interactive map to provide spatial distribution of selected variables. Summary data not nutrition are not presented in this dashboard.

URL: <http://demographics.virtualkenya.org/>

Contact: Info@upande.com.

Kenya GIS Data Portal

The Kenya GIS Data Portal provides access to the World Resources Institute's website. The portal has data and information contained in the digital publication, "Nature's Benefit in Kenya - An Atlas of Ecosystems and Human Well Being" published in 2007 by World Resources Institute; the Department of Resource Surveys and Remote Sensing, Ministry of Environment and Natural Resources, Kenya; the Central Bureau of Statistics, Ministry of Planning and National Development, Kenya; and the International Livestock Research Institute.

The publication presents geo-referenced statistical information on population and household expenditures with spatial data on ecosystems. Maps presented include: rainfall distribution; major ecosystem types; geospatial profile of poverty and well-being; main sources of foods and livelihoods; crops and livestock production and water sources.

The maps and statistics provide information and analysis on numerous cross-sectoral linkages between human well-being and the environment that could provide information for multi-sectoral data analysis of factors that impact on nutritional status. Some of the data were collected in 1999 or earlier, so may be nearly 20 years old or older.

URL: <http://www.wri.org/resources/data-sets/kenya-gis-data>

Contact: Florence Landsberg. Email: flandsberg@wri.org.

Kenya Inequalities Portal

The Kenya Inequalities Portal is an online open access knowledge resource for inequality related issues in Kenya. The portal holds a digital document entitled "Exploring Kenya's Inequality - Pulling Apart or Pooling Together" published in 2013 by Kenya National Bureau of Statistics (KNBS) and Society for International Development (SID). The National and County Reports on inequality are available in the portal.

The National Report present in-depth analysis of poverty and inequalities in socio-economic variables such as: population, income and expenditure inequality (Gini coefficient), education, employment, access to sources of water, education, sanitation, housing and energy. The County Report on the other hand presents data and information on these variables for all counties in Kenya as graphs and some is presented as maps by sub-county.

URL: <http://inequalities.sidint.net/kenya/>

Contact: Society for International Development. Tel: +254(0) 202737991/2, 20273992.

Kenya County Health Fact Sheets Dashboard

The Kenya County Health Fact Sheets dashboard was created by the Health Policy Project (HPP), which has now ended and is continuing as Health Policy Plus (HP+ Project), in collaboration with Kenya's Ministry of Health. The dashboard is open access and provides summary statistics displayed on maps and graphics for selected health indicators for all 47 counties. It further gives comparisons of the indicators with national estimates.

Summary data include: population of males and females, children under 5 years and under 1 year; nutrition: percentage of underweight or stunted children; fully immunized children aged 12-23 months; maternal health: births delivered at health facility, contraceptive prevalence; HIV, TB and Malaria; health personnel (per 100,000 people) in public hospitals; number of health facilities and health care financing.

The Fact Sheet which was last updated in July 2015, derives data from the following main sources:

- Kenya health information system (HIS) Statistical reports and the <http://his.kenya.org> website
- Kenya Demographic and Health Surveys.
- Integrated Disease Surveillance Reports.
- Master Facility List <https://www.health.go.ke>.

URL: <https://healthpolicyproject.com/index.cfm?id=kenyaCHFS>

Contact: policyinfo@thepalladiumgroup.com.

Kenya NCD Info Portal

The Kenya NCD Info is an open access portal for sharing knowledge on non-communicable diseases (NCD) with public health practitioners, researcher, health care providers, policy makers and the public. The web-portal was developed by the African Population and Health Research Centre (APHRC) in collaboration with key stakeholders in dealing with non-communicable diseases.

The dashboard generates summary national and county data on NCDs by selecting variables such as location (urban/rural), year, risk factors, incidence, prevalence and disability adjusted life year (DALY). Statistics can be generated for diabetes, hypertension, cardiovascular diseases, cancer (breast, prostate, cervical); smoking and alcohol consumption. There are no data yet for most counties.

The main sources of data:

- Health Management Information System (HMIS)
- Kenya National Diabetes Strategy
- Cancer Registry (Nairobi and Eldoret)
- World Health Organization (WHO) publications

URL: <http://ncdinfo-kenya.org/knowledge-portal/data>

Contact: African Population and Health Research Centre. Tel: +254(20) 400 1000. Mobile: +254 722 205 993, 733 410 102. Email: info@ncdinfo-kenya.org.

Kenya Country STAT Database

The Kenya Country STAT is an online database developed by the Food and Agriculture Organization (FAO) of the United Nations in collaboration with the Ministry of Agriculture, Livestock and Fisheries. The database organizes and integrates data on food and agriculture to facilitate access to data and information spread in institutions.

The database provides summary statistics, presented below, mostly at a national level in form of tables. The data are useful for trend analysis of agricultural data.

National level statistics

- Crop production-areas planted harvested, 2001-2013
- Milk production, 2000-2012
- Meat production, 2000-2012
- Livestock production, 1997-2012
- Protein supply (g/capita/day, 2006-2012)
- Fat supply (g/capita/day), 2006-2012
- Food consumer price index (CPI), 1998-2013
- Distribution of land use, 2007
- Fish capture production (tons), 1990-1998
- County level statistics
- Crop production by year and Administrative level, 2005-2008
- Food availability, 2005/06
- Food consumption (Kcal/capita/day)

Data sources:

- Ministry of Agriculture Livestock and Fisheries
- Kenya Integrated Household Budget Survey 2005/06
- Kenya Economic Surveys

URL: <http://www.countrystat.org/home.aspx?c=KEN>

Contact: Mr. Tom Dienya, Ministry of Agriculture, Livestock and Fisheries, Nairobi.

Maji Data Dashboard

Maji data is an online pro-poor database on water and sanitation developed by the Ministry of Water and Irrigation (MWI) and the Water Services Trust Fund (WSTF) in collaboration with UN Habitat, the German Development Bank (KfW), Google.org and GiZ.

Majidata provides water and sanitation data covering all informal settlements (slums) in Kenya and summary information at national and county level. The interactive database allows users to link data to satellite imagery and overlaid maps for the whole country by county, by the main towns in each county and by specific impoverished areas within the towns. Summary statistics in the database include:

- Population density
- Population by type of area; unplanned, planned and mixed area
- Household characteristic: household dwelling size, household size, average household per dwelling plot
- Number of areas prone to flooding
- Number of areas located in as near hazardous location/zone
- Main type of housing of found in low-income areas
- Types of water supply perception of residents on water supply, main sources of drinking water, domestic water treatment methods, time needed to fetch water

The Dashboard uses primary data collected between February 2009 and March 2011 by Water Services Trust Fund in partnership with stakeholders.

URL: <http://www.majidata.go.ke/>

Contact: Eng. Jacqueline K. Musyoki (Mrs), OGW, CEO, Water Services Trust Fund.

Wazi Map Kenya Dashboard

Wazimap Kenya is an online open web dashboard for easy and quick access of information disaggregated at national and county levels. It uses secondary data from Kenya National Bureau of Statistics (KNBS) and other sources. The summary data on key variable such as household characteristics, agriculture, education, employment, health, and nutrition (z-scores for stunting, wasting and underweight) are presented in charts and graphs.

Wazimap Kenya allows for side by side comparison of variables to enhance the understanding disparities among administrative areas.

Data sources:

- Kenya Population and Housing Census 2009
- Kenya Demographic and Health Survey 2014
- <http://www.internationalbudget.org/wp-content/uploads/IBP-Budget-Brief-18B-Final.pdf>

URL: <https://kenya.wazimap.org/>

Contact: unknown.

Data sources in Kenya relevant for nutrition

This section provides details of sources of data that are relevant to nutrition or could provide summary data, their location access, contact persons and where applicable the websites where the information can be obtained.

National Periodic Surveys

The national sample surveys are conducted by Kenya National Bureau of Statistics in the master sample frame of the national sample survey and evaluation programme. The surveys are designed to produce representative estimates for indicators at national level. Table 1-5 in the Annex presents the surveys that are sources of data relevant to nutrition.

Routine Data Systems

Kenya Health Information Systems (KHIS)

The Ministry of Health provides routine nutrition data collected at facility level using the DHIS2 platform hosted on the website <http://hiskenya.org>. Access to the KHIS requires a username and password. Details of the nutrition variables collected and reported in the system are presented in Table 6. It is worth noting that the reliability of routine nutrition data collected using the SMART sampling method have improved since all surveys conducted by organizations are validated by the National Nutrition Information Technical Working Group chaired by the Ministry of Health with participation of the National Drought Management Authority, UNICEF, the FAO and the World Food Programme.

Agricultural Information System

The Ministry of Agriculture, Livestock and Fisheries generate a lot of data and information across a range of programmes, yet these are not linked. This situation is compounded by the lack of a harmonized agricultural information management system. Currently each department has its own data gathering, analysis and dissemination though the Central Planning and Monitoring Unit facilitates the publishing of national reports. For instance, the Department of Agriculture produces an annual national report containing summary information about agricultural production, food stocks and food reserves, market information, hazards and early warning. The summary data and information are only available in reports in PDF format.

The Ministry has nevertheless made considerable progress towards revamping the management of agricultural data and information. Guidelines⁷ to enhance the quality and value of agricultural data and statistics are in place and a Statistics Unit has been set up and tasked to establish an integrated database for crops, livestock and fisheries production statistics; for market prices; for early warning and geospatial statistics; and for statistics on nutrition and gender.

Historical agricultural data and information spread in programmes and projects are being consolidated and computerized. The Ministry is now working towards an open access data system by June 2017.

Contact: Mr. Tom Dienya, Ag. Head, Statistics Unit, Ministry of Agriculture, Livestock and Fisheries, State Department of Agriculture.

Early Warning

The National Drought Management Authority (NDMA) under the Ministry of Devolution and Planning is responsible for collecting data in arid and semi-arid lands (ASAL). The Authority operates an early warning /surveillance system that monitors drought in 23 ASAL counties. Data are collected by field monitors at household level in sentinel sites based on livelihood zones. The NDMA uses software called REWAS to enter the data online in each county which is then uploaded to the national level.

The nutrition surveys conducted in the Early Warning System are the main source of data for the Ministry of Health Nutrition Platform (section 2.1). Surveys are conducted twice annually, after the short and long rains. The only anthropometric measurement made is mid upper arm circumference (MUAC) of children aged 6 to 59 months. The data are reported by sentinel site, ward, sub-county and county.

⁷ Kenya Agricultural Data Collection and Management Guidelines. Ministry of Agriculture, Livestock and Fisheries, State Department of Agriculture. May 2014.

Other Sources of Information

Kenya Threshold 21 (Kenya T21)

Kenya Threshold 21 is an integrated software planning tool to inform policies towards development of sustainable agriculture. It uses software called *Vensim* to simulate the impact of social, economic and environmental interventions at national level. Kenya T21 is useful in policy analysis to help understand the impact of different policies on stakeholders and to model simulations that provide evidence for decision making.

Kenya T21 is particularly adapted to address the impact of policies and can simulate the economic, social and environmental impact of interventions over time⁸. The model has society, economy and environment spheres with a nutrition component falling under the health sector in the society sphere. The indicators in the society sphere include: total population, total births, total deaths, basic health care, fertility, life expectancy, adult literacy, primary enrolment, human development index and performance towards the Millennium Development Goals.

Although nutrition is used to represent a measurable output in the health sector, nutrition data has not been included in the model, hence simulations have not been done.

Contact person: Mr. Jackson Kiprono, Senior Economist II. Ministry of Devolution and Planning, State Department of Planning and Statistics.

The KEMRI/Wellcome Trust Research Programme

The KEMRI/Wellcome Trust Research Programme is currently working on an analysis of the spatial and environmental determinants of malnutrition. The research group has brought together secondary data sets from various household based surveys on factors that may contribute to malnutrition. The research group has largely used nutrition outcome data from the KIHBS, KDHS, MICS and SMART surveys and their experience in merging data sets and computation of nutrition indices could contribute towards building capacity in assessing data quality for analysing data to understand the multi-sectoral factors that contribute to poor nutritional status.

Contact: Thomas Gachie. Email: t.gachie@kemri-wellcome.org.

⁸ Kenya T21 Model. A Report on Strengthening Institutional Capacity for Integrated Climate Change Adaptation and Comprehensive National Development Planning In Kenya. Ministry of State For Planning, National Development and Vision 2030 and Ministry of Environment and Mineral Resources. June 2012.

Appendix: Major sources of data relevant to NIPN

Table 1. Kenya Demographic and Health Surveys

Source of Data	Kenya Demographic and Health Surveys
Location	Kenya National Bureau of Statistics (KNBS)
Access (open/closed)	Metadata open. Access to raw data on request.
Type of data	National sample surveys collected from enumeration areas based on census data. Some KDHS 2014 data captured at county level.
Major variables of interest	<ul style="list-style-type: none"> ▶ Anthropometric indicators: stunted, wasted , underweight, body mass index ▶ Infant and young child feeding patterns ▶ Micronutrient intake ▶ Infant and child mortality ▶ Maternal and child health ▶ HIV and AIDS ▶ Malaria ▶ Non-communicable diseases
Geographic location	National, disaggregated by region and county
Ownership	KNBS
Contact person(s)	Josiah Kaara, Senior Economist/Statistician Kenya National Bureau of Statistics, Nairobi
Period covered	Surveys: Conducted every 5 years, 1993, 1998, 2003, 2008/9, 2014/15
Availability to users	Reports available at KNBS. Raw data for 2003 - 2014 stored in the KNBS Kenya National Data (KeNADA) platform. Microdata accessible on request.
Last update	2016
Internet/URL	www.knbs.go.ke statistics.knbs.or.ke/nada/index.php/catalogue/history

Table 2. Kenya Integrated Household Budget Surveys

Source of Data	Kenya Integrated Household Budget Surveys
Location	Kenya National Bureau of Statistics (KNBS)
Access (open/closed)	Metadata open. Access to raw data on request.
Type of data	National sample surveys collected from enumeration areas based on census data. The KIHBS collect household data over a 12 months period.
Major variables of interest	<ul style="list-style-type: none"> ▶ Education ▶ Health ▶ Child health and anthropometry ▶ Water and sanitation ▶ Food consumption ▶ Agricultural production and sales ▶ Income ▶ Recent shocks to household welfare
Geographic location	National
Ownership	KNBS
Contact person(s)	Josiah Kaara, Senior Economist/Statistician Kenya National Bureau of Statistics, Nairobi
Period covered	Surveys: Every 10 years - 2005/06 - 2015/16
Availability to users	Report for 2005/06 available at KNBS. Raw data stored in the KNBS KENADA data platform. The 2015/16 survey is complete, data processing ongoing
Last update	N/A
Internet/URL	www.knbs.go.ke statistics.knbs.or.ke/nada/index.php/catalogue/history

Table 3. National Health Surveys

Source of Data	Kenya Malaria Indicator Survey 2010, 2015 Kenya AIDS Indicator Survey 2007, 2012 Kenya National Micronutrient Survey 2011
Location	KNBS/Ministry of Health
Access (open/closed)	Metadata open. Access to raw data on request.
Type of data	Household sample surveys
Geographic location	National
Ownership	KNBS/Ministry of Health
Contact person(s)	Mr. Mutua Kakinyi Senior Manager, Data Processing Kenya National Bureau of Statistics, Nairobi
Availability to users	Reports: available, Microdata: on request.
Last update	May 2016
Internet/URL	statistics.knbs.or.ke/nada/index.php/catalogue/history

Table 4. Household Welfare Monitoring Surveys

Source of Data	Household Welfare Monitoring Surveys
Location	Kenya National Bureau of Statistics (KNBS)
Access (open/closed)	Access to raw data - open accessible on request
Type of data	National sample surveys collected from enumeration areas based on census data.
Major variables of interest	<ul style="list-style-type: none"> ▶ Poverty computation variables ▶ Water and sanitation ▶ Birth weight, child's current weight ▶ Immunization ▶ Breastfeeding ▶ Household amenities ▶ Livestock ownership
Geographic location	National
Ownership	KNBS
Contact person(s)	Mr. Mutua Kakinyi Senior Manager, Data Processing Kenya National Bureau of Statistics, Nairobi mkakinyi@knbs.or.ke
Period covered	1992-1997
Availability to users	Summary data available at KNBS. Raw data for 2000, 2011, 2013-14) stored in the KNBS KENADA data platform.
Last update	N/A
Internet/URL	statistics.knbs.or.ke/nada/index.php/catalogue/history

Table 5. Multiple Indicator Cluster Surveys

Source of Data	Multiple Indicator Cluster Surveys
Location	Kenya National Bureau of Statistics (KNBS)/UNICEF)
Access (open/closed)	Access to microdata is open on request through log-in to KNBS website
Type of data	National sample surveys collected from enumeration areas based on census data.
Major variables of interest	<ul style="list-style-type: none"> ▶ Low birth weight ▶ Anthropometric indicators: stunting, wasting, underweight ▶ Breastfeeding ▶ Salt iodization ▶ Child health
Geographic location	National, disaggregated by region
Ownership	KNBS
Contact person(s)	Josiah Kaara, Senior Economist/Statistician Kenya National Bureau of Statistics, Nairobi
Period covered	Surveys: 2000 - National; 2007-Eastern Region; 2008 - North Eastern Province; 2011-Nyanza Region -Counties: Homabay, Kisii, Kisumu, Migori, and Siaya; 2013-14 Western and North Rift - Bungoma, Kakamega and Turkana.
Availability to users	Summary data available at KNBS. Raw data for 2000, 2011, 2013-14) stored in the KNBS KeNADA data platform.
Last update	N/A
Internet/URL	www.knbs.or.ke https://data.unicef.org/topic/nutrition/malnutrition/statistics.knbs.or.ke/nada/index.php/catalogue/history

Table 6. District Health Information System

Source of Data	District Health and Information System (DHIS2)
Location	Ministry of Health
Access (open/closed)	Access obtainable from the Ministry of Health, Health Management Information Systems Department, Afya House, Nairobi
Type of data	Routine data collected at facility level and community level
Major variables of interest	<ul style="list-style-type: none"> ▶ Growth monitoring ▶ Growth faltering ▶ Breastfeeding ▶ Integrated management of acute malnutrition ▶ Vitamin A supplements given to children ▶ Iron Folic Acid Supplements given to pregnant women ▶ Micronutrients ▶ HIV & Nutrition/TB
Geographic location	National /county
Ownership	Ministry of Health
Contact person(s)	Ms. Lucy Gathigi, Assistant Chief Nutrition Officer - M&E Nutrition and Dietetics Unit, Ministry of Health. Mr. Samuel Murage, Health Information Officer, Ministry of Health.
Period covered	Routine - collected monthly
Availability to users	Reported on a monthly basis
Last update	Updated on monthly basis
Internet/URL	https://hiskenya.org

Summary

This review was commissioned by the Global Support Facility for the National Information Platform for Nutrition in order to better understand potential sources and users of information related to nutrition in Kenya. It describes information platforms and electronic data portals that are relevant to human nutrition. These sources could be used to provide data for analysis to better understand the causes of malnutrition in Kenya, or could be provided with data, as an output of analysis. The review starts by describing the main data sharing platforms and portals including dashboards and websites from which information relevant to nutrition can be accessed to facilitate integrated food and nutrition analysis and other data sources. It then presents a matrix of the sources of data, where they are located, their accessibility and availability, the contact persons, and the address of relevant websites.

National Information Platforms for Nutrition is an initiative of the European Commission's Directorate General for Cooperation and Development, also supported by the United Kingdom Department for International Development and the Bill & Melinda Gates Foundation.



BILL & MELINDA
GATES foundation

GSF-NIPN

Agropolis International
1000 avenue Agropolis
34394 Montpellier cedex 5
France

www.nipn-nutrition-platforms.org
gsf_nipn@agropolis.fr